



ProPEL Indy asked for your ideas about the future of I-65 and I-70 within the I-465 loop. Public feedback alongside the study team’s collection and analysis of data helped ProPEL Indy identify transportation issues, opportunities, and desired outcomes in the study area.

TRANSPORTATION ISSUES



Bridge & Pavement Conditions

There are bridge and pavement sections on the interstates that are nearing the end of their lifespan and will need to be replaced.



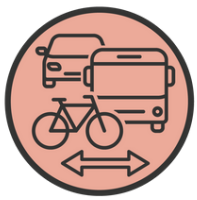
Roadway Safety

Between 2018 and 2022, there were more than 10,500 crashes within the study area. Seven percent resulted in fatal or incapacitating injuries.



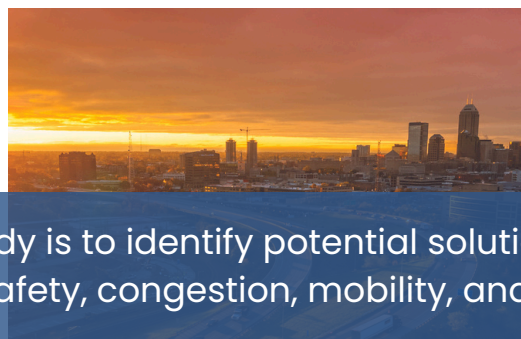
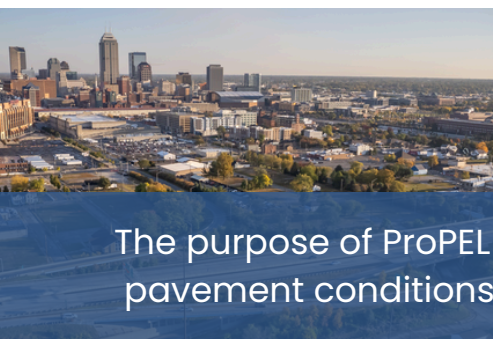
Roadway Mobility

Decreased mobility on the interstates due to roadway operational issues and traffic congestion. This is projected to worsen over time.

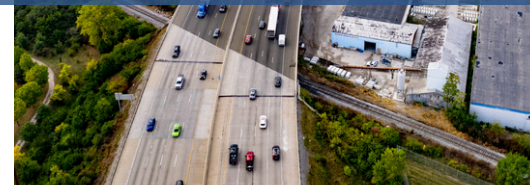
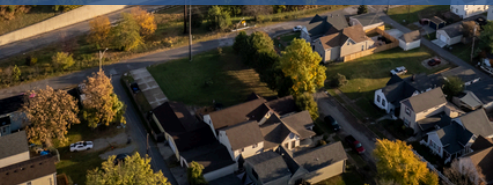


Multimodal & Neighborhood Connections

There are gaps in the pedestrian and bicycle infrastructure across and near the interstates.



The purpose of ProPEL Indy is to identify potential solutions to improve bridge and pavement conditions, safety, congestion, mobility, and multimodal connectivity.



SHARE YOUR FEEDBACK AT [PROPELINDY.COM](https://propelindy.com)



ProPEL Indy has used public feedback to identify community goals for the study. Aligned with the study's four pillars, these goals are opportunities that could be addressed by potential solutions identified by the study, and they will be considered alongside other factors as the study progresses.

COMMUNITY GOALS

Quality of Life & Livability

Identify community enhancements that improve the quality of life of adjacent neighborhoods.

Avoid and/or minimize impacts to the natural and human environment.

Economic Growth & Opportunity

Provide transportation infrastructure to support local, regional, and statewide economic development goals.

Ensure efficient and reliable transportation to support the visitor experience.

Transportation & Mobility

Support emerging technologies and related infrastructure.

Consider INDOT's Carbon Reduction Strategy, National Electric Vehicle Infrastructure Plan, and future Resilience Plan during alternative development.

Equity

Actively engage stakeholders who use, cross, work, or live near the interstates throughout the study.

Provide accessible, fair, safe, affordable, reliable, and sustainable mobility along and across the interstates for community members based on identified needs and input received.

SHARE YOUR FEEDBACK AT [PROPELINDY.COM](https://propelindy.com)