

Environmental Constraints Report

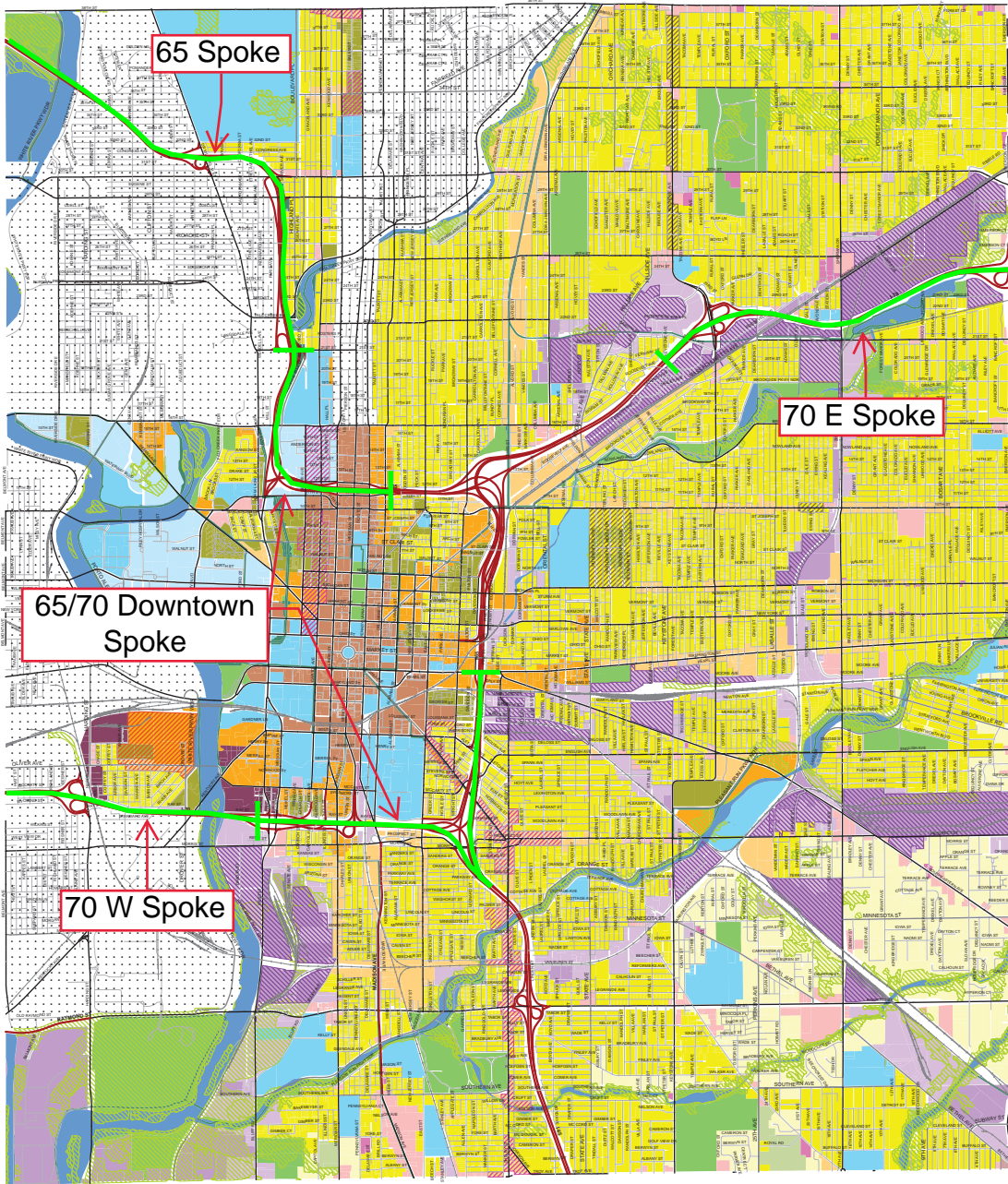
---

# ATTACHMENT J. LAND USE MAPS

the  
**MARION COUNTY** **LAND USE PLAN**

A component of the Comprehensive Plan for Indianapolis and Marion County

ADOPTED BY THE METROPOLITAN DEVELOPMENT COMMISSION AS AN ELEMENT OF THE COMPREHENSIVE PLAN FOR INDIANAPOLIS AND MARION COUNTY  
NOVEMBER 21, 2018  
2018-CPS-R-004



**Land Use Map**  
CENTER TOWNSHIP



**LEGEND**

**LIVING TYPOLOGIES**

- RURAL OR ESTATE NEIGHBORHOOD
- SUBURBAN NEIGHBORHOOD
- TRADITIONAL NEIGHBORHOOD
- CITY NEIGHBORHOOD

**MIXED-USE TYPOLOGIES**

- VILLAGE MIXED-USE
- URBAN MIXED-USE
- CORE MIXED-USE
- INSTITUTION-ORIENTED MIXED-USE

**WORKING TYPOLOGIES**

- OFFICE COMMERCIAL
- COMMUNITY COMMERCIAL
- REGIONAL COMMERCIAL
- HEAVY COMMERCIAL
- OFFICE/INDUSTRIAL MIXED-USE
- LIGHT INDUSTRIAL
- HEAVY INDUSTRIAL

**OTHER USES**

- AGRICULTURAL PRESERVATION
- LARGE-SCALE PARK
- LINEAR PARK
- FLOODWAY
- REGIONAL SPECIAL-USE

**OVERLAYS**

- ENVIRONMENTALLY SENSITIVE AREA (ES)
- TRANSIT-ORIENTED DEVELOPMENT (TOD)
- TOWN CENTER (TC)
- RESIDENTIAL CORRIDOR RESERVE (RR)
- INDUSTRIAL RESERVE (IR)
- AIRPORT VICINITY (AV)
- CRITICAL AREA (CA)

..... This plan does not apply to areas covered in dots.

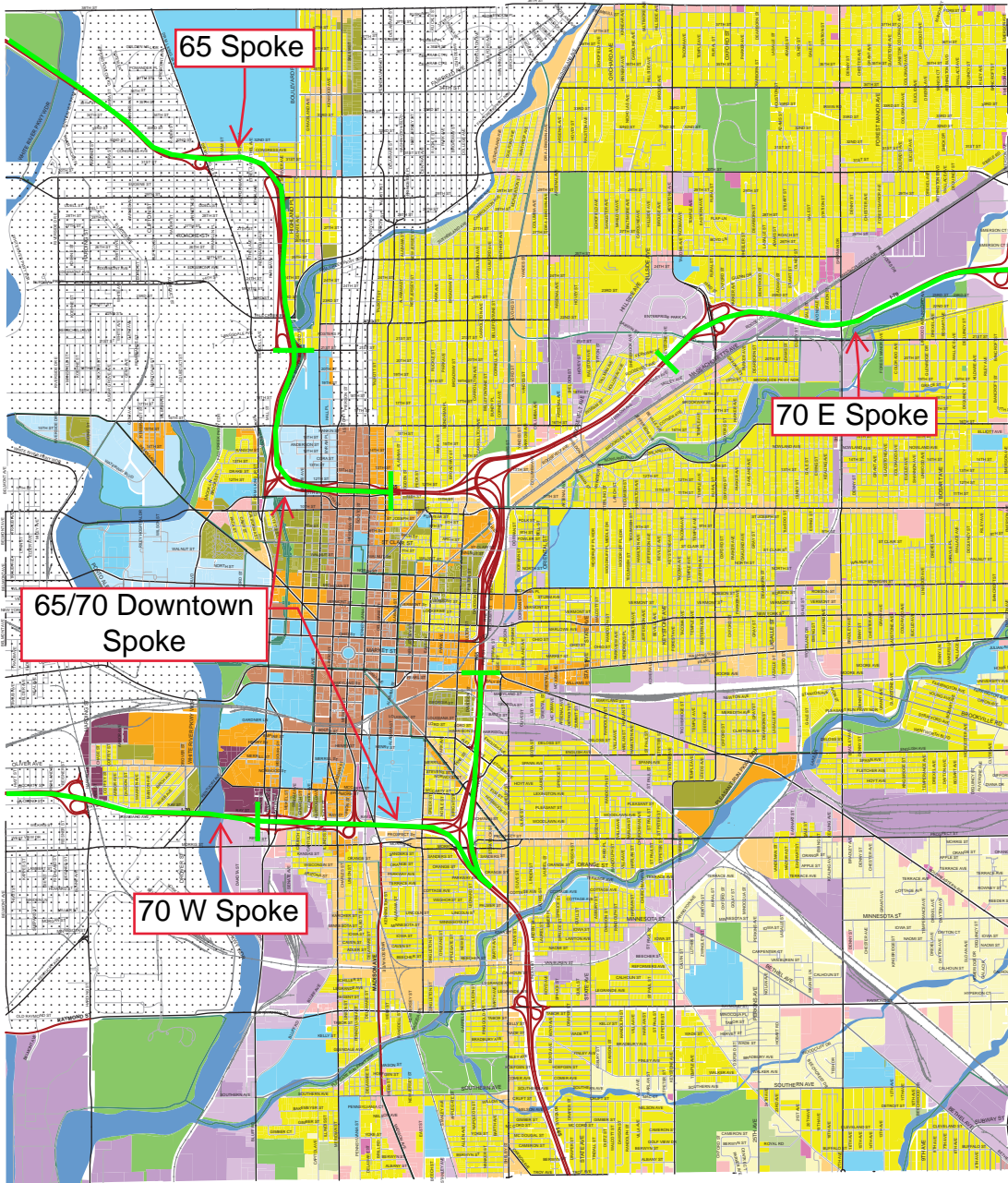
The MARION COUNTY LAND USE PLAN consists of two major components: A Land Use Pattern Book and Land Use Maps. The Land Use Pattern Book is the written component of the Marion County Land Use Plan, and lays out the land uses, typologies, and overlays that are applied in the Land Use Maps. The Land Use Pattern Book, as amended from time to time, is a separate document which must be consulted in conjunction with the Land Use Plan Maps when evaluating or making decisions about land use and development.



the  
**MARION COUNTY** LAND USE PLAN

A component of the Comprehensive Plan for Indianapolis and Marion County

ADOPTED BY THE METROPOLITAN DEVELOPMENT COMMISSION AS AN ELEMENT OF THE COMPREHENSIVE PLAN FOR INDIANAPOLIS AND MARION COUNTY  
NOVEMBER 21, 2018  
2018-CPS-R-004



**Land Use Map**  
CENTER TOWNSHIP - TYPOLOGIES/USES



**LEGEND**

**LIVING TYPOLOGIES**

- RURAL OR ESTATE NEIGHBORHOOD
- SUBURBAN NEIGHBORHOOD
- TRADITIONAL NEIGHBORHOOD
- CITY NEIGHBORHOOD

**MIXED-USE TYPOLOGIES**

- VILLAGE MIXED-USE
- URBAN MIXED-USE
- CORE MIXED-USE
- INSTITUTION-ORIENTED MIXED-USE

**WORKING TYPOLOGIES**

- OFFICE COMMERCIAL
- COMMUNITY COMMERCIAL
- REGIONAL COMMERCIAL
- HEAVY COMMERCIAL
- OFFICE/INDUSTRIAL MIXED-USE
- LIGHT INDUSTRIAL
- HEAVY INDUSTRIAL

**OTHER USES**

- AGRICULTURAL PRESERVATION
- LARGE-SCALE PARK
- LINEAR PARK
- FLOODWAY
- REGIONAL SPECIAL-USE

**OVERLAYS**

- ENVIRONMENTALLY SENSITIVE AREA (ES)
- TRANSIT-ORIENTED DEVELOPMENT (TOD)
- TOWN CENTER (TC)
- RESIDENTIAL CORRIDOR RESERVE (RR)
- INDUSTRIAL RESERVE (IR)
- AIRPORT VICINITY (AV)
- CRITICAL AREA (CA)

..... This plan does not apply to areas covered in dots.

The MARION COUNTY LAND USE PLAN consists of two major components: A Land Use Pattern Book and Land Use Maps. The Land Use Pattern Book is the written component of the Marion County Land Use Plan, and lays out the land uses, typologies, and overlays that are applied in the Land Use Maps. The Land Use Pattern Book, as amended from time to time, is a separate document which must be consulted in conjunction with the Land Use Plan Maps when evaluating or making decisions about land use and development.

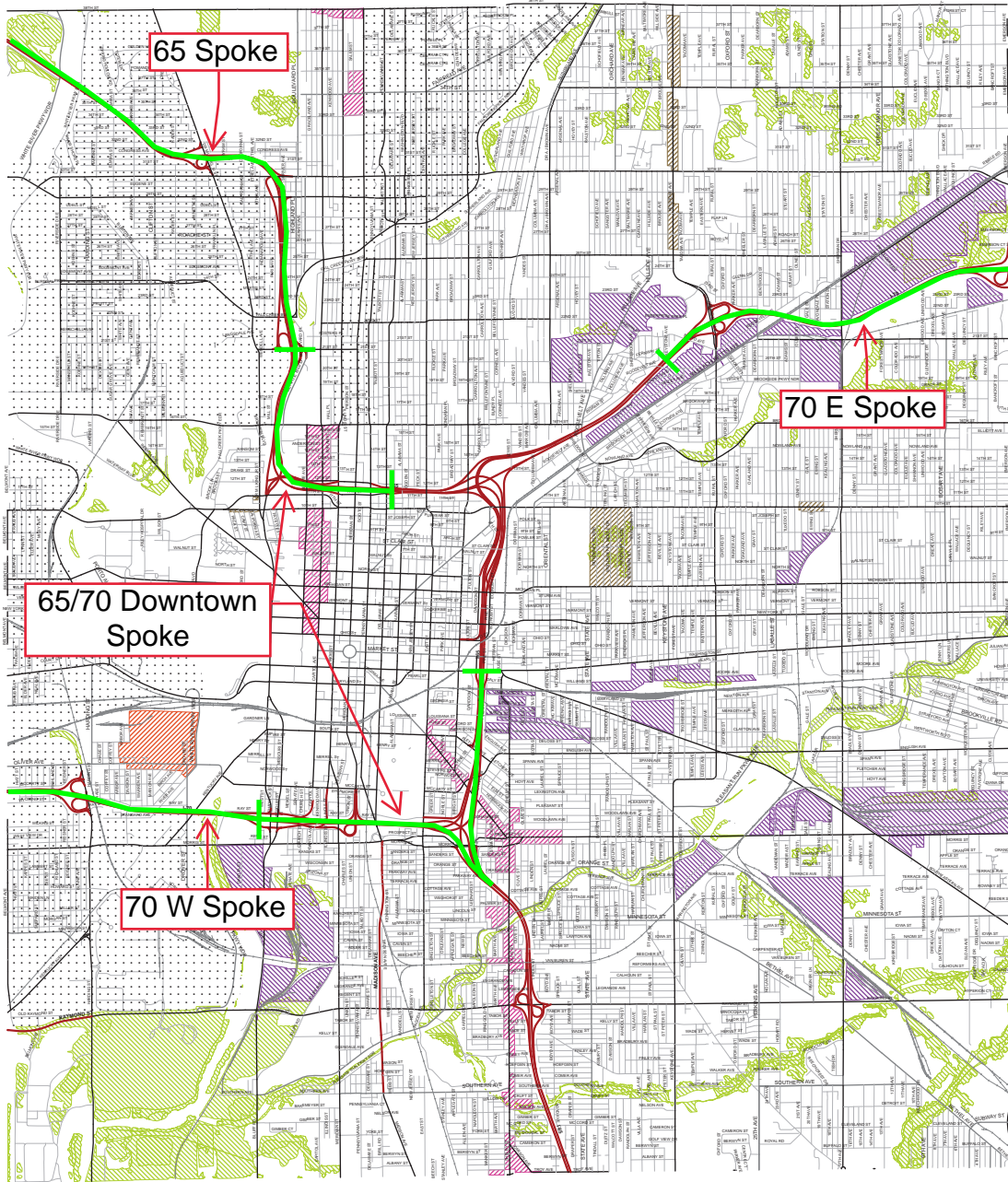


the  
**MARION COUNTY** **LAND USE PLAN**

A component of the Comprehensive Plan for Indianapolis and Marion County

ADOPTED BY THE METROPOLITAN DEVELOPMENT COMMISSION AS AN ELEMENT OF THE COMPREHENSIVE PLAN FOR INDIANAPOLIS AND MARION COUNTY

NOVEMBER 21, 2018  
2018-CPS-R-004



**Land Use Map**  
CENTER TOWNSHIP - OVERLAYS



**LEGEND**

**LIVING TYPOLOGIES**

- RURAL OR ESTATE NEIGHBORHOOD
- SUBURBAN NEIGHBORHOOD
- TRADITIONAL NEIGHBORHOOD
- CITY NEIGHBORHOOD

**MIXED-USE TYPOLOGIES**

- VILLAGE MIXED-USE
- URBAN MIXED-USE
- CORE MIXED-USE
- INSTITUTION-ORIENTED MIXED-USE

**WORKING TYPOLOGIES**

- OFFICE COMMERCIAL
- COMMUNITY COMMERCIAL
- REGIONAL COMMERCIAL
- HEAVY COMMERCIAL
- OFFICE/INDUSTRIAL MIXED-USE
- LIGHT INDUSTRIAL
- HEAVY INDUSTRIAL

**OTHER USES**

- AGRICULTURAL PRESERVATION
- LARGE-SCALE PARK
- LINEAR PARK
- FLOODWAY
- REGIONAL SPECIAL-USE

**OVERLAYS**

- ENVIRONMENTALLY SENSITIVE AREA (ES)
- TRANSIT-ORIENTED DEVELOPMENT (TOD)
- TOWN CENTER (TC)
- RESIDENTIAL CORRIDOR RESERVE (RR)
- INDUSTRIAL RESERVE (IR)
- AIRPORT VICINITY(AV)
- CRITICAL AREA (CA)

*..... This plan does not apply to areas covered in dots.*

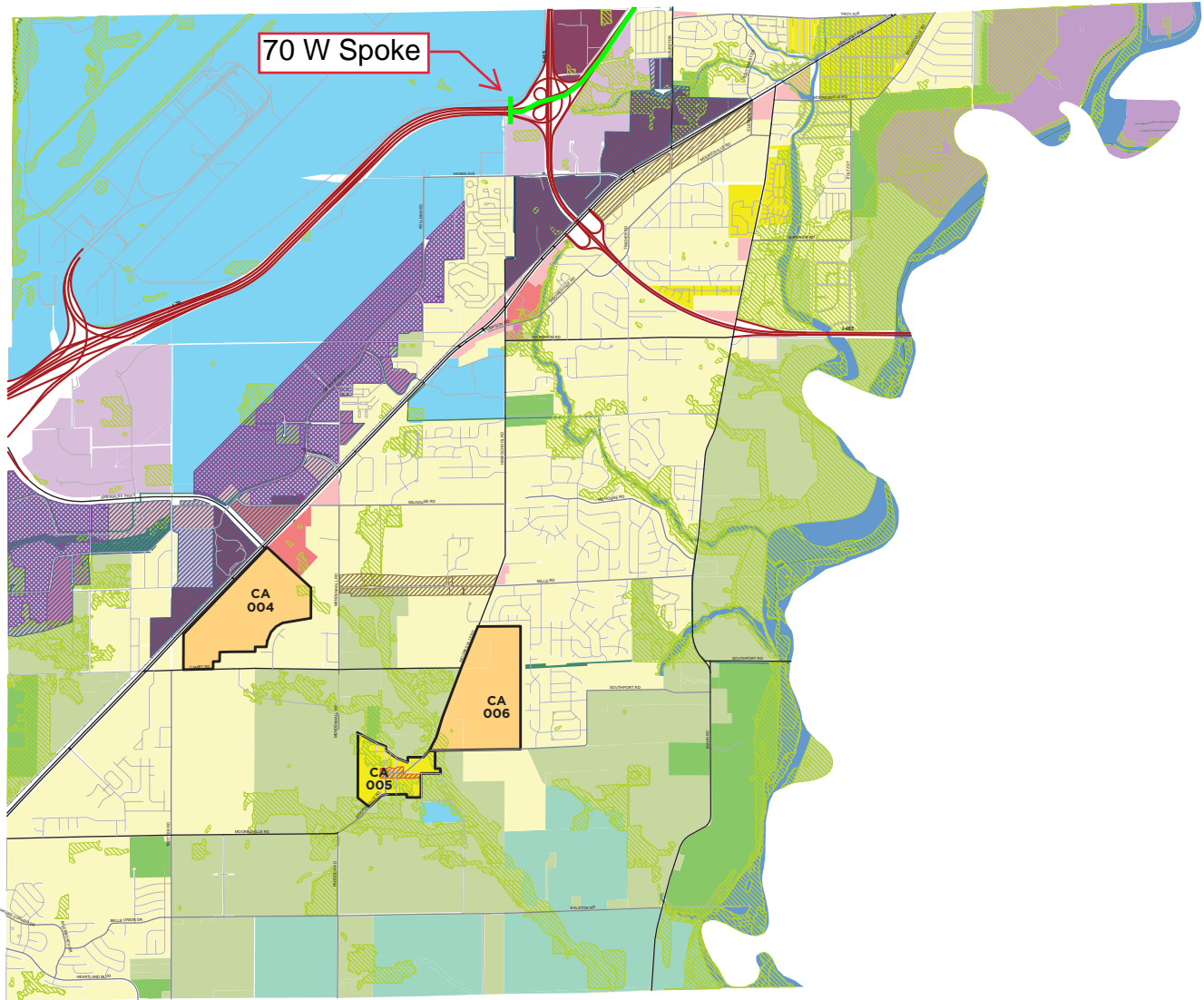
The MARION COUNTY LAND USE PLAN consists of two major components: A Land Use Pattern Book and Land Use Maps. The Land Use Pattern Book is the written component of the Marion County Land Use Plan, and lays out the land uses, typologies, and overlays that are applied in the Land Use Maps. The Land Use Pattern Book, as amended from time to time, is a separate document which must be consulted in conjunction with the Land Use Plan Maps when evaluating or making decisions about land use and development.



the  
**MARION COUNTY** **LAND USE PLAN**

A component of the Comprehensive Plan for Indianapolis and Marion County

ADOPTED BY THE METROPOLITAN DEVELOPMENT COMMISSION AS AN ELEMENT OF THE COMPREHENSIVE PLAN FOR INDIANAPOLIS AND MARION COUNTY  
 DECEMBER 5, 2018  
 2018-CPS-R-009



**Land Use Map**  
 DECATUR TOWNSHIP



**LEGEND**

**LIVING TYPOLOGIES**

- RURAL OR ESTATE NEIGHBORHOOD
- SUBURBAN NEIGHBORHOOD
- TRADITIONAL NEIGHBORHOOD
- CITY NEIGHBORHOOD

**MIXED-USE TYPOLOGIES**

- VILLAGE MIXED-USE
- URBAN MIXED-USE
- CORE MIXED-USE
- INSTITUTION-ORIENTED MIXED-USE

**WORKING TYPOLOGIES**

- OFFICE COMMERCIAL
- COMMUNITY COMMERCIAL
- REGIONAL COMMERCIAL
- HEAVY COMMERCIAL
- OFFICE/INDUSTRIAL MIXED-USE
- LIGHT INDUSTRIAL
- HEAVY INDUSTRIAL

**OTHER USES**

- AGRICULTURAL PRESERVATION
- LARGE-SCALE PARK
- LINEAR PARK
- FLOODWAY
- REGIONAL SPECIAL-USE

**OVERLAYS**

- ENVIRONMENTALLY SENSITIVE AREA (ES)
- TRANSIT-ORIENTED DEVELOPMENT (TOD)
- TOWN CENTER (TC)
- RESIDENTIAL CORRIDOR RESERVE (RR)
- INDUSTRIAL RESERVE (IR)
- AIRPORT VICINITY(AV)
- CRITICAL AREA (CA)

..... This plan does not apply to areas covered in dots.

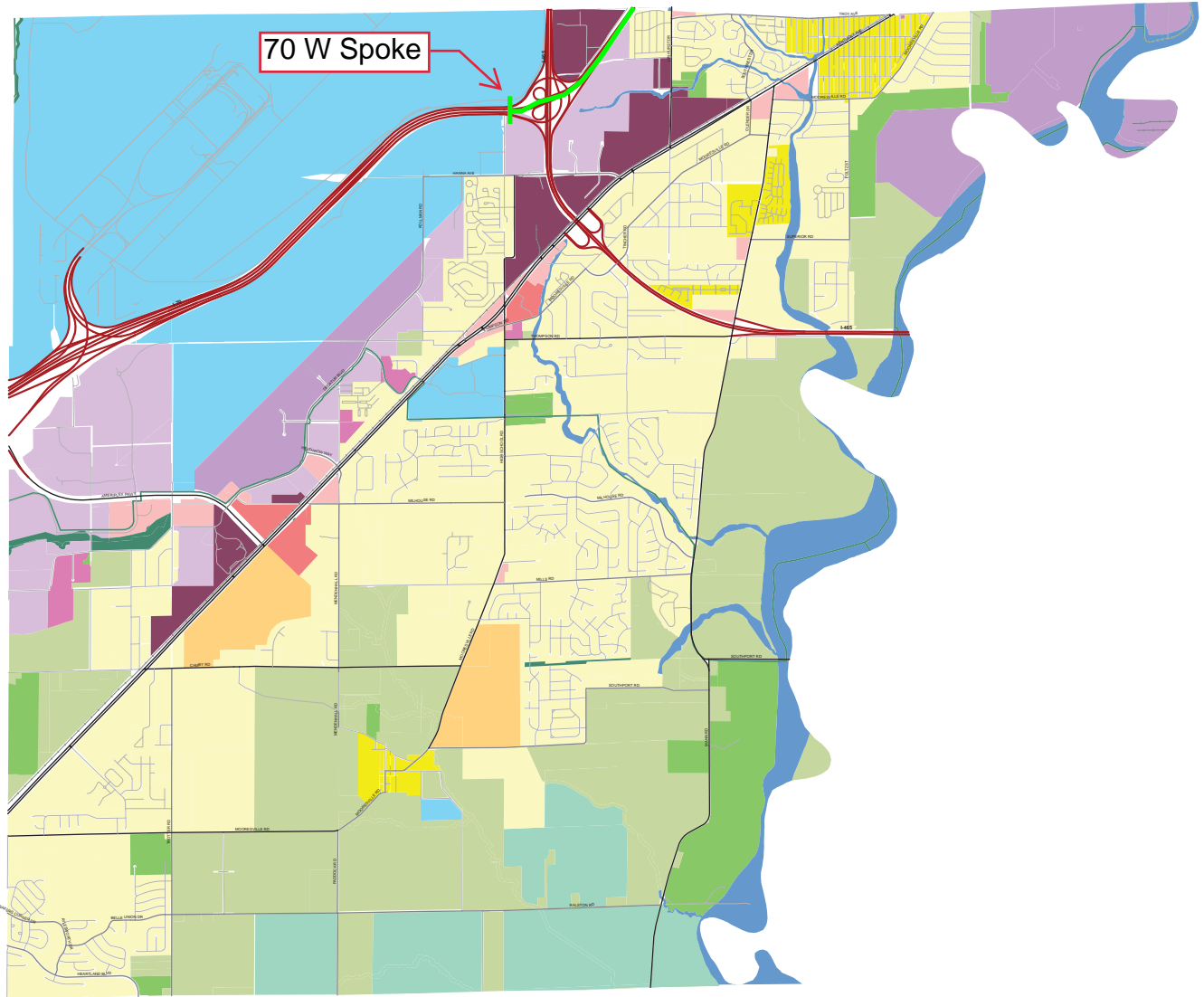
The MARION COUNTY LAND USE PLAN consists of two major components: A Land Use Pattern Book and Land Use Maps. The Land Use Pattern Book is the written component of the Marion County Land Use Plan, and lays out the land uses, typologies, and overlays that are applied in the Land Use Maps. The Land Use Pattern Book, as amended from time to time, is a separate document which must be consulted in conjunction with the Land Use Plan Maps when evaluating or making decisions about land use and development.



the  
**MARION COUNTY** **LAND USE PLAN**

A component of the Comprehensive Plan for Indianapolis and Marion County

ADOPTED BY THE  
 METROPOLITAN DEVELOPMENT COMMISSION  
 AS AN ELEMENT OF THE COMPREHENSIVE PLAN  
 FOR INDIANAPOLIS AND MARION COUNTY  
 DECEMBER 5, 2018  
 2018-CPS-R-009



**Land Use Map**  
 DECATUR TOWNSHIP - TYPOLOGIES/USES



**LEGEND**

**LIVING TYPOLOGIES**

- RURAL OR ESTATE NEIGHBORHOOD
- SUBURBAN NEIGHBORHOOD
- TRADITIONAL NEIGHBORHOOD
- CITY NEIGHBORHOOD

**MIXED-USE TYPOLOGIES**

- VILLAGE MIXED-USE
- URBAN MIXED-USE
- CORE MIXED-USE
- INSTITUTION-ORIENTED MIXED-USE

**WORKING TYPOLOGIES**

- OFFICE COMMERCIAL
- COMMUNITY COMMERCIAL
- REGIONAL COMMERCIAL
- HEAVY COMMERCIAL
- OFFICE/INDUSTRIAL MIXED-USE
- LIGHT INDUSTRIAL
- HEAVY INDUSTRIAL

**OTHER USES**

- AGRICULTURAL PRESERVATION
- LARGE-SCALE PARK
- LINEAR PARK
- FLOODWAY
- REGIONAL SPECIAL-USE

**OVERLAYS**

- ENVIRONMENTALLY SENSITIVE AREA (ES)
- TRANSIT-ORIENTED DEVELOPMENT (TOD)
- TOWN CENTER (TC)
- RESIDENTIAL CORRIDOR RESERVE (RR)
- INDUSTRIAL RESERVE (IR)
- AIRPORT VICINITY(AV)
- CRITICAL AREA (CA)

..... This plan does not apply to areas covered in dots.

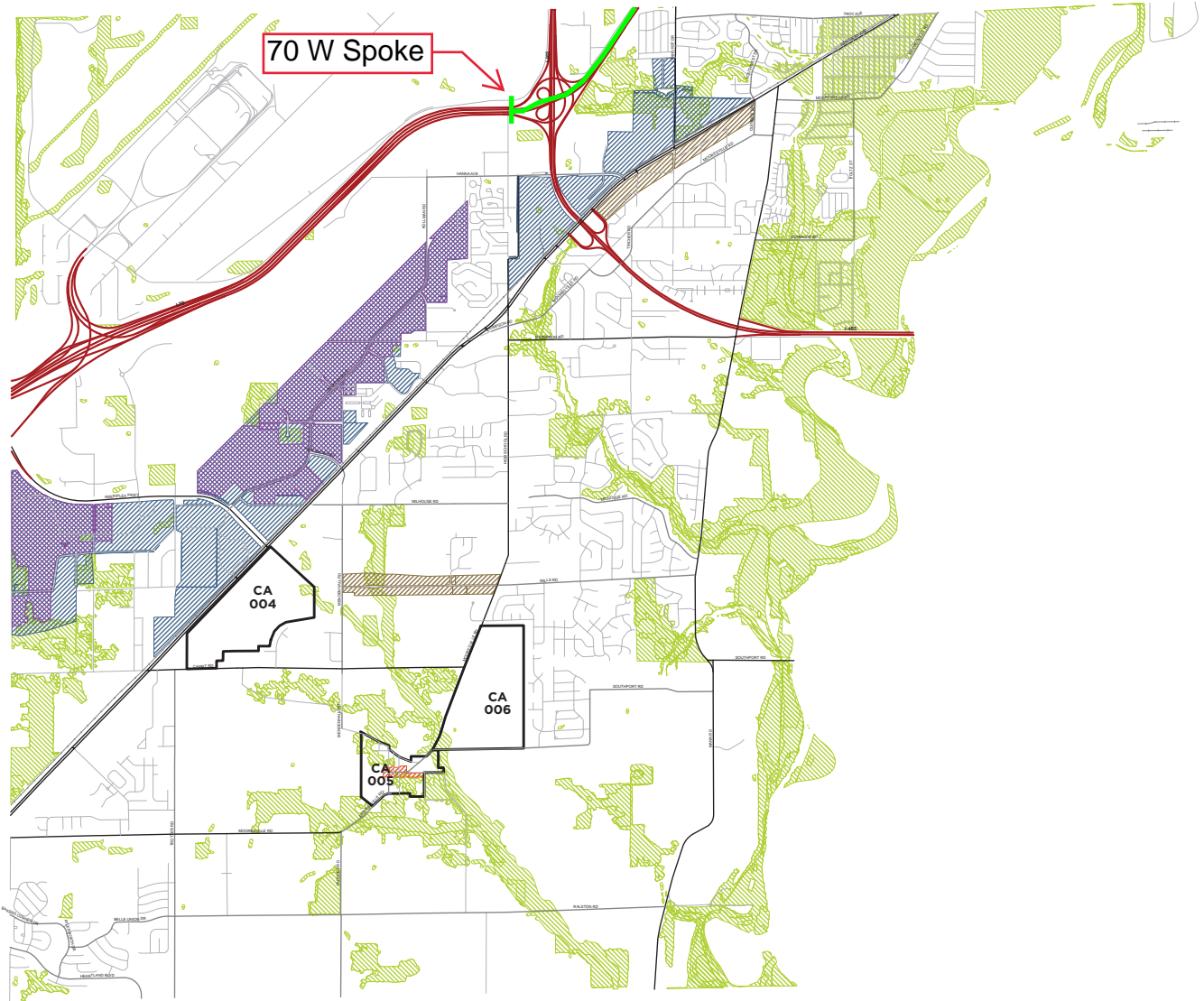
The MARION COUNTY LAND USE PLAN consists of two major components: A Land Use Pattern Book and Land Use Maps. The Land Use Pattern Book is the written component of the Marion County Land Use Plan, and lays out the land uses, typologies, and overlays that are applied in the Land Use Maps. The Land Use Pattern Book, as amended from time to time, is a separate document which must be consulted in conjunction with the Land Use Plan Maps when evaluating or making decisions about land use and development.



the  
**MARION COUNTY** **LAND USE PLAN**

A component of the Comprehensive Plan for Indianapolis and Marion County

ADOPTED BY THE METROPOLITAN DEVELOPMENT COMMISSION AS AN ELEMENT OF THE COMPREHENSIVE PLAN FOR INDIANAPOLIS AND MARION COUNTY  
DECEMBER 5, 2018  
2018-CPS-R-009



**Land Use Map**  
DECATUR TOWNSHIP- OVERLAYS



**LEGEND**

**LIVING TYPOLOGIES**

- RURAL OR ESTATE NEIGHBORHOOD
- SUBURBAN NEIGHBORHOOD
- TRADITIONAL NEIGHBORHOOD
- CITY NEIGHBORHOOD

**MIXED-USE TYPOLOGIES**

- VILLAGE MIXED-USE
- URBAN MIXED-USE
- CORE MIXED-USE
- INSTITUTION-ORIENTED MIXED-USE

**WORKING TYPOLOGIES**

- OFFICE COMMERCIAL
- COMMUNITY COMMERCIAL
- REGIONAL COMMERCIAL
- HEAVY COMMERCIAL
- OFFICE/INDUSTRIAL MIXED-USE
- LIGHT INDUSTRIAL
- HEAVY INDUSTRIAL

**OTHER USES**

- AGRICULTURAL PRESERVATION
- LARGE-SCALE PARK
- LINEAR PARK
- FLOODWAY
- REGIONAL SPECIAL-USE

**OVERLAYS**

- ENVIRONMENTALLY SENSITIVE AREA (ES)
- TRANSIT-ORIENTED DEVELOPMENT (TOD)
- TOWN CENTER (TC)
- RESIDENTIAL CORRIDOR RESERVE (RR)
- INDUSTRIAL RESERVE (IR)
- AIRPORT VICINITY(AV)
- CRITICAL AREA (CA)

..... This plan does not apply to areas covered in dots.

The MARION COUNTY LAND USE PLAN consists of two major components: A Land Use Pattern Book and Land Use Maps. The Land Use Pattern Book is the written component of the Marion County Land Use Plan, and lays out the land uses, typologies, and overlays that are applied in the Land Use Maps. The Land Use Pattern Book, as amended from time to time, is a separate document which must be consulted in conjunction with the Land Use Plan Maps when evaluating or making decisions about land use and development.

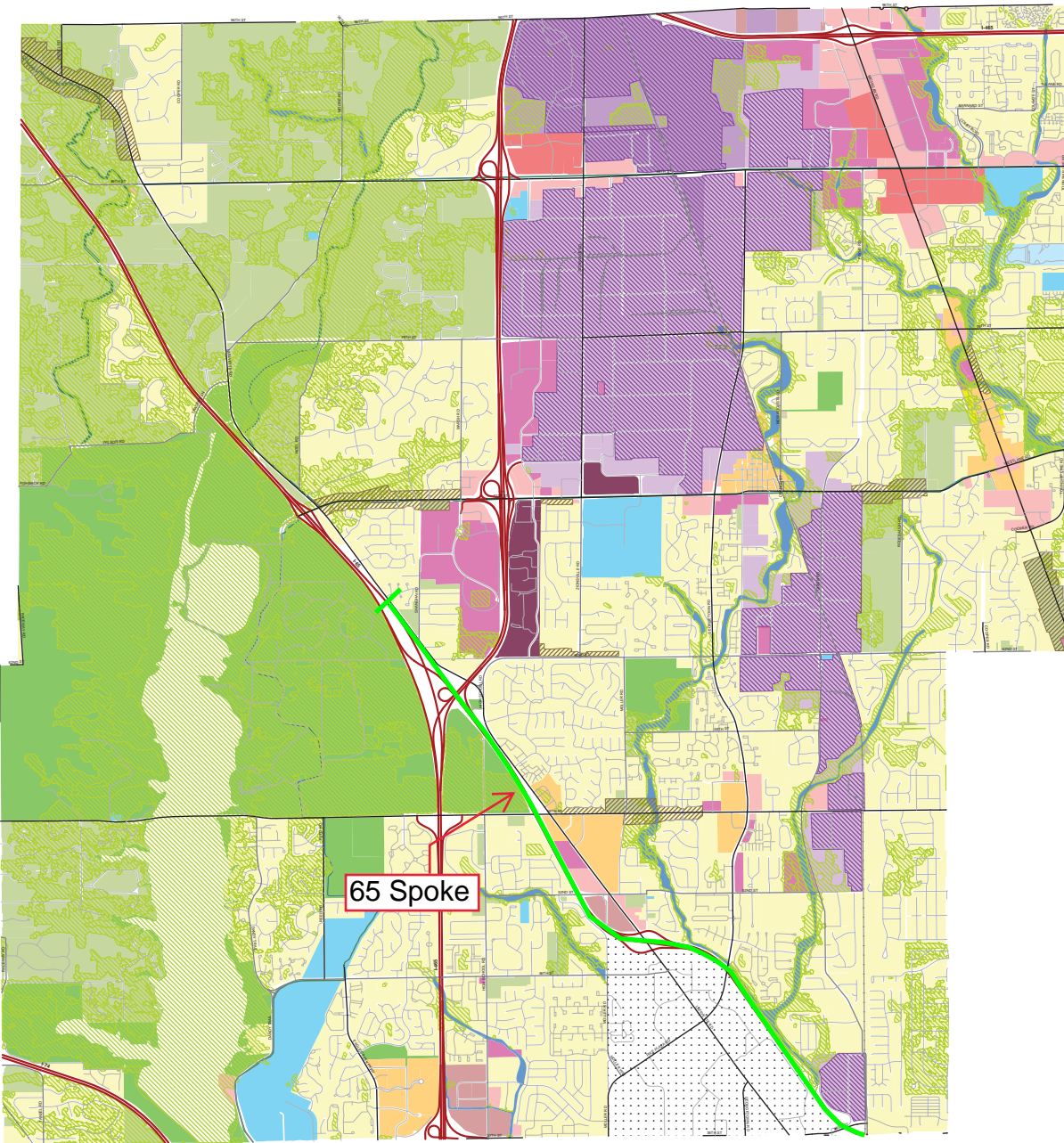


the **MARION COUNTY** **LAND USE PLAN**

A component of the Comprehensive Plan for Indianapolis and Marion County

ADOPTED BY THE METROPOLITAN DEVELOPMENT COMMISSION AS AN ELEMENT OF THE COMPREHENSIVE PLAN FOR INDIANAPOLIS AND MARION COUNTY

DECEMBER 5, 2018  
2018-CPS-R-007



**Land Use Map**  
PIKE TOWNSHIP



**LEGEND**

**LIVING TYPOLOGIES**

- RURAL OR ESTATE NEIGHBORHOOD
- SUBURBAN NEIGHBORHOOD
- TRADITIONAL NEIGHBORHOOD
- CITY NEIGHBORHOOD

**MIXED-USE TYPOLOGIES**

- VILLAGE MIXED-USE
- URBAN MIXED-USE
- CORE MIXED-USE
- INSTITUTION-ORIENTED MIXED-USE

**WORKING TYPOLOGIES**

- OFFICE COMMERCIAL
- COMMUNITY COMMERCIAL
- REGIONAL COMMERCIAL
- HEAVY COMMERCIAL
- OFFICE/INDUSTRIAL MIXED-USE
- LIGHT INDUSTRIAL
- HEAVY INDUSTRIAL

**OTHER USES**

- AGRICULTURAL PRESERVATION
- LARGE-SCALE PARK
- LINEAR PARK
- FLOODWAY
- REGIONAL SPECIAL-USE

**OVERLAYS**

- ENVIRONMENTALLY SENSITIVE AREA (ES)
- TRANSIT-ORIENTED DEVELOPMENT (TOD)
- TOWN CENTER (TC)
- RESIDENTIAL CORRIDOR RESERVE (RR)
- INDUSTRIAL RESERVE (IR)
- AIRPORT VICINITY (AV)
- CRITICAL AREA (CA)

..... This plan does not apply to areas covered in dots.

The MARION COUNTY LAND USE PLAN consists of two major components: A Land Use Pattern Book and Land Use Maps. The Land Use Pattern Book is the written component of the Marion County Land Use Plan, and lays out the land uses, typologies, and overlays that are applied in the Land Use Maps. The Land Use Pattern Book, as amended from time to time, is a separate document which must be consulted in conjunction with the Land Use Plan Maps when evaluating or making decisions about land use and development.



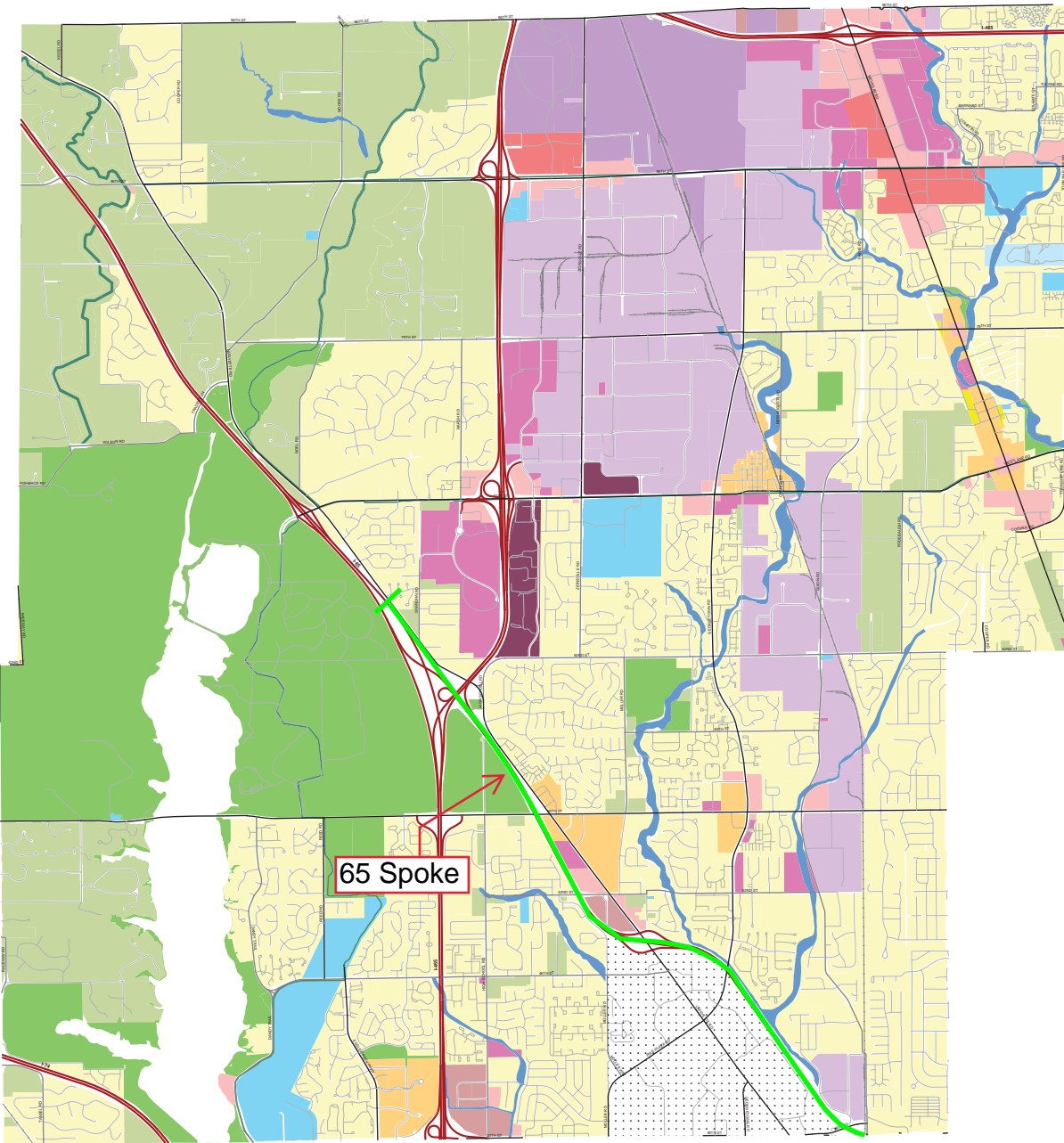


the  
**MARION COUNTY** **LAND USE PLAN**

A component of the Comprehensive Plan for Indianapolis and Marion County

ADOPTED BY THE METROPOLITAN DEVELOPMENT COMMISSION AS AN ELEMENT OF THE COMPREHENSIVE PLAN FOR INDIANAPOLIS AND MARION COUNTY

DECEMBER 5, 2018  
 2018-CPS-R-007



**Land Use Map**  
 PIKE TOWNSHIP - TYPOLOGIES/USES



**LEGEND**

**LIVING TYPOLOGIES**

- RURAL OR ESTATE NEIGHBORHOOD
- SUBURBAN NEIGHBORHOOD
- TRADITIONAL NEIGHBORHOOD
- CITY NEIGHBORHOOD

**MIXED-USE TYPOLOGIES**

- VILLAGE MIXED-USE
- URBAN MIXED-USE
- CORE MIXED-USE
- INSTITUTION-ORIENTED MIXED-USE

**WORKING TYPOLOGIES**

- OFFICE COMMERCIAL
- COMMUNITY COMMERCIAL
- REGIONAL COMMERCIAL
- HEAVY COMMERCIAL
- OFFICE/INDUSTRIAL MIXED-USE
- LIGHT INDUSTRIAL
- HEAVY INDUSTRIAL

**OTHER USES**

- AGRICULTURAL PRESERVATION
- LARGE-SCALE PARK
- LINEAR PARK
- FLOODWAY
- REGIONAL SPECIAL-USE

**OVERLAYS**

- ENVIRONMENTALLY SENSITIVE AREA (ES)
- TRANSIT-ORIENTED DEVELOPMENT (TOD)
- TOWN CENTER (TC)
- RESIDENTIAL CORRIDOR RESERVE (RR)
- INDUSTRIAL RESERVE (IR)
- AIRPORT VICINITY(AV)
- CRITICAL AREA (CA)

..... This plan does not apply to areas covered in dots.

The MARION COUNTY LAND USE PLAN consists of two major components: A Land Use Pattern Book and Land Use Maps. The Land Use Pattern Book is the written component of the Marion County Land Use Plan, and lays out the land uses, typologies, and overlays that are applied in the Land Use Maps. The Land Use Pattern Book, as amended from time to time, is a separate document which must be consulted in conjunction with the Land Use Plan Maps when evaluating or making decisions about land use and development.

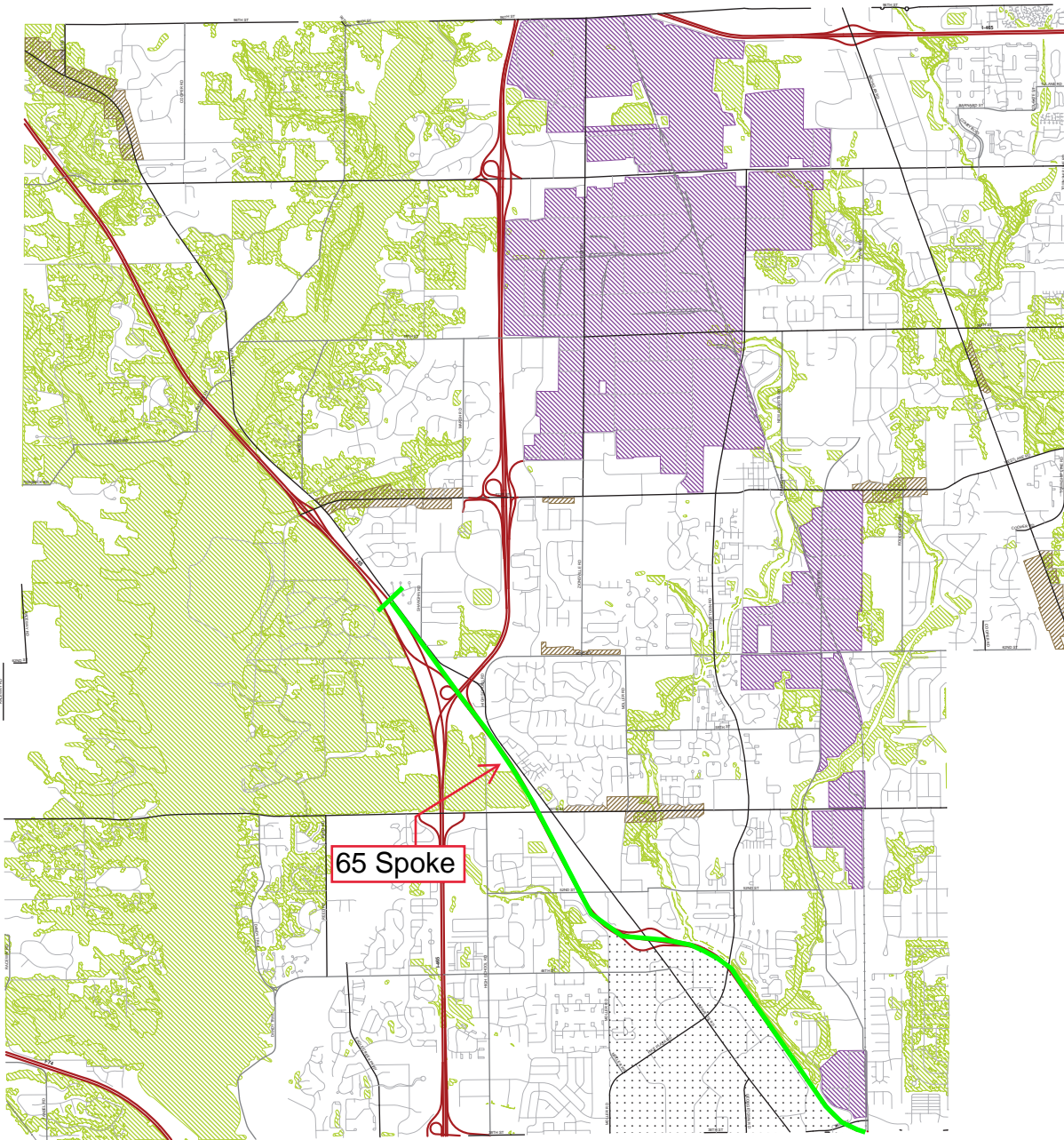


the  
**MARION COUNTY** **LAND USE PLAN**

A component of the Comprehensive Plan for Indianapolis and Marion County

ADOPTED BY THE METROPOLITAN DEVELOPMENT COMMISSION AS AN ELEMENT OF THE COMPREHENSIVE PLAN FOR INDIANAPOLIS AND MARION COUNTY

DECEMBER 5, 2018  
 2018-CPS-R-007



**Land Use Map**  
 PIKE TOWNSHIP - OVERLAYS



**LEGEND**

**LIVING TYPOLOGIES**

- RURAL OR ESTATE NEIGHBORHOOD
- SUBURBAN NEIGHBORHOOD
- TRADITIONAL NEIGHBORHOOD
- CITY NEIGHBORHOOD

**MIXED-USE TYPOLOGIES**

- VILLAGE MIXED-USE
- URBAN MIXED-USE
- CORE MIXED-USE
- INSTITUTION-ORIENTED MIXED-USE

**WORKING TYPOLOGIES**

- OFFICE COMMERCIAL
- COMMUNITY COMMERCIAL
- REGIONAL COMMERCIAL
- HEAVY COMMERCIAL
- OFFICE/INDUSTRIAL MIXED-USE
- LIGHT INDUSTRIAL
- HEAVY INDUSTRIAL

**OTHER USES**

- AGRICULTURAL PRESERVATION
- LARGE-SCALE PARK
- LINEAR PARK
- FLOODWAY
- REGIONAL SPECIAL-USE

**OVERLAYS**

- ENVIRONMENTALLY SENSITIVE AREA (ES)
- TRANSIT-ORIENTED DEVELOPMENT (TOD)
- TOWN CENTER (TC)
- RESIDENTIAL CORRIDOR RESERVE (RR)
- INDUSTRIAL RESERVE (IR)
- AIRPORT VICINITY (AV)
- CRITICAL AREA (CA)

..... This plan does not apply to areas covered in dots.

The MARION COUNTY LAND USE PLAN consists of two major components: A Land Use Pattern Book and Land Use Maps. The Land Use Pattern Book is the written component of the Marion County Land Use Plan, and lays out the land uses, typologies, and overlays that are applied in the Land Use Maps. The Land Use Pattern Book, as amended from time to time, is a separate document which must be consulted in conjunction with the Land Use Plan Maps when evaluating or making decisions about land use and development.

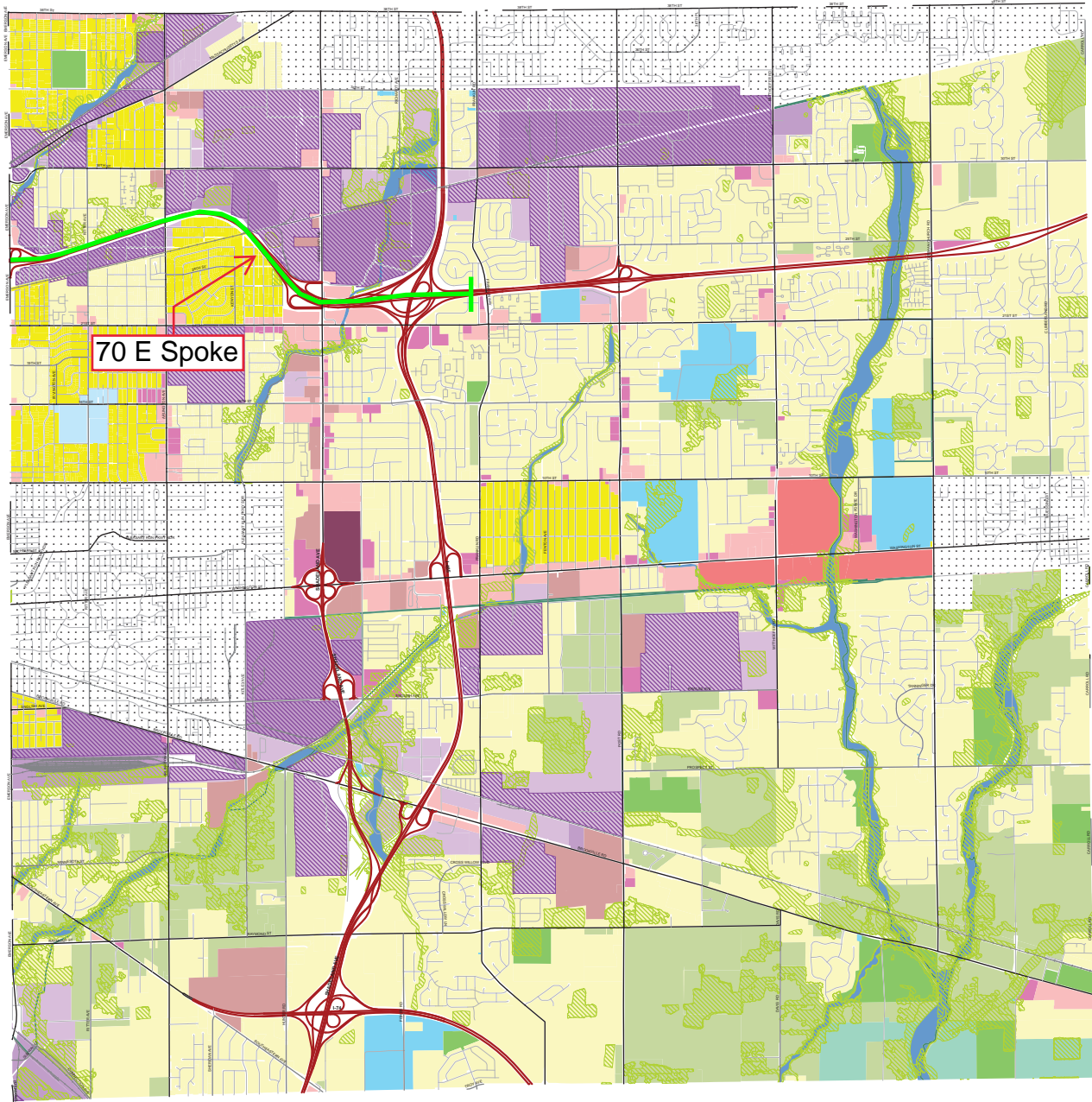


the  
**MARION COUNTY** **LAND USE PLAN**

A component of the Comprehensive Plan for Indianapolis and Marion County

ADOPTED BY THE METROPOLITAN DEVELOPMENT COMMISSION AS AN ELEMENT OF THE COMPREHENSIVE PLAN FOR INDIANAPOLIS AND MARION COUNTY

DECEMBER 19, 2018  
 2018-CPS-R-011



**Land Use Map**  
 WARREN TOWNSHIP



**LEGEND**

**LIVING TYPOLOGIES**

- RURAL OR ESTATE NEIGHBORHOOD
- SUBURBAN NEIGHBORHOOD
- TRADITIONAL NEIGHBORHOOD
- CITY NEIGHBORHOOD

**MIXED-USE TYPOLOGIES**

- VILLAGE MIXED-USE
- URBAN MIXED-USE
- CORE MIXED-USE
- INSTITUTION-ORIENTED MIXED-USE

**WORKING TYPOLOGIES**

- OFFICE COMMERCIAL
- COMMUNITY COMMERCIAL
- REGIONAL COMMERCIAL
- HEAVY COMMERCIAL
- OFFICE/INDUSTRIAL MIXED-USE
- LIGHT INDUSTRIAL
- HEAVY INDUSTRIAL

**OTHER USES**

- AGRICULTURAL PRESERVATION
- LARGE-SCALE PARK
- LINEAR PARK
- FLOODWAY
- REGIONAL SPECIAL-USE

**OVERLAYS**

- ENVIRONMENTALLY SENSITIVE AREA (ES)
- TRANSIT-ORIENTED DEVELOPMENT (TOD)
- TOWN CENTER (TC)
- RESIDENTIAL CORRIDOR RESERVE (RR)
- INDUSTRIAL RESERVE (IR)
- AIRPORT VICINITY(AV)
- CRITICAL AREA (CA)

..... This plan does not apply to areas covered in dots.

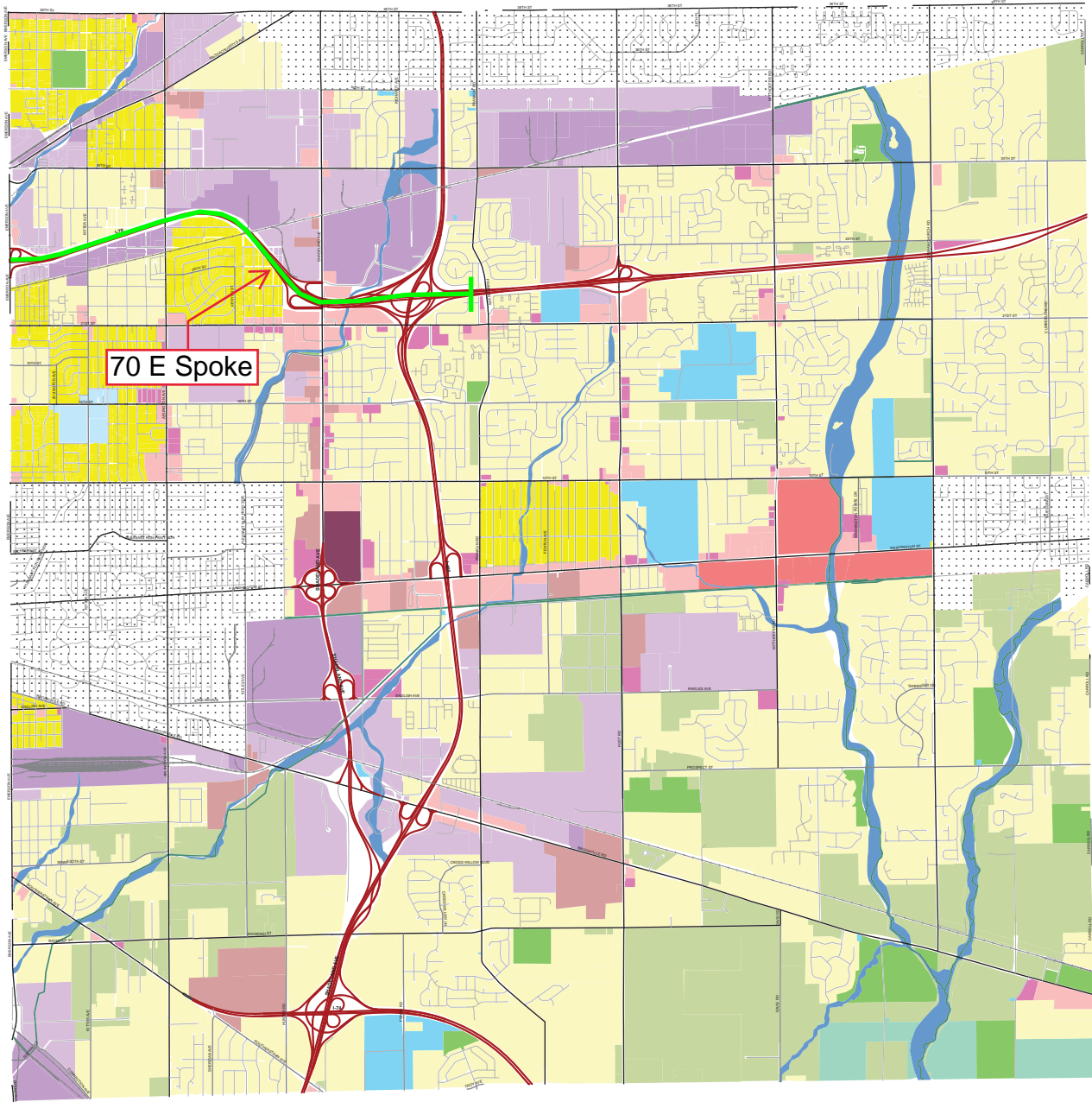
The MARION COUNTY LAND USE PLAN consists of two major components: A Land Use Pattern Book and Land Use Maps. The Land Use Pattern Book is the written component of the Marion County Land Use Plan, and lays out the land uses, typologies, and overlays that are applied in the Land Use Maps. The Land Use Pattern Book, as amended from time to time, is a separate document which must be consulted in conjunction with the Land Use Plan Maps when evaluating or making decisions about land use and development.



the  
**MARION COUNTY** LAND USE PLAN

A component of the Comprehensive Plan for Indianapolis and Marion County

ADOPTED BY THE METROPOLITAN DEVELOPMENT COMMISSION AS AN ELEMENT OF THE COMPREHENSIVE PLAN FOR INDIANAPOLIS AND MARION COUNTY  
 DECEMBER 19, 2018  
 2018-CPS-R-011



**Land Use Map**  
 WARREN TOWNSHIP - TYPOLOGIES/USES



**LEGEND**

**LIVING TYPOLOGIES**

- RURAL OR ESTATE NEIGHBORHOOD
- SUBURBAN NEIGHBORHOOD
- TRADITIONAL NEIGHBORHOOD
- CITY NEIGHBORHOOD

**MIXED-USE TYPOLOGIES**

- VILLAGE MIXED-USE
- URBAN MIXED-USE
- CORE MIXED-USE
- INSTITUTION-ORIENTED MIXED-USE

**WORKING TYPOLOGIES**

- OFFICE COMMERCIAL
- COMMUNITY COMMERCIAL
- REGIONAL COMMERCIAL
- HEAVY COMMERCIAL
- OFFICE/INDUSTRIAL MIXED-USE
- LIGHT INDUSTRIAL
- HEAVY INDUSTRIAL

**OTHER USES**

- AGRICULTURAL PRESERVATION
- LARGE-SCALE PARK
- LINEAR PARK
- FLOODWAY
- REGIONAL SPECIAL-USE

**OVERLAYS**

- ENVIRONMENTALLY SENSITIVE AREA (ES)
- TRANSIT-ORIENTED DEVELOPMENT (TOD)
- TOWN CENTER (TC)
- RESIDENTIAL CORRIDOR RESERVE (RR)
- INDUSTRIAL RESERVE (IR)
- AIRPORT VICINITY (AV)
- CRITICAL AREA (CA)

*..... This plan does not apply to areas covered in dots.*

The MARION COUNTY LAND USE PLAN consists of two major components: A Land Use Pattern Book and Land Use Maps. The Land Use Pattern Book is the written component of the Marion County Land Use Plan, and lays out the land uses, typologies, and overlays that are applied in the Land Use Maps. The Land Use Pattern Book, as amended from time to time, is a separate document which must be consulted in conjunction with the Land Use Plan Maps when evaluating or making decisions about land use and development.

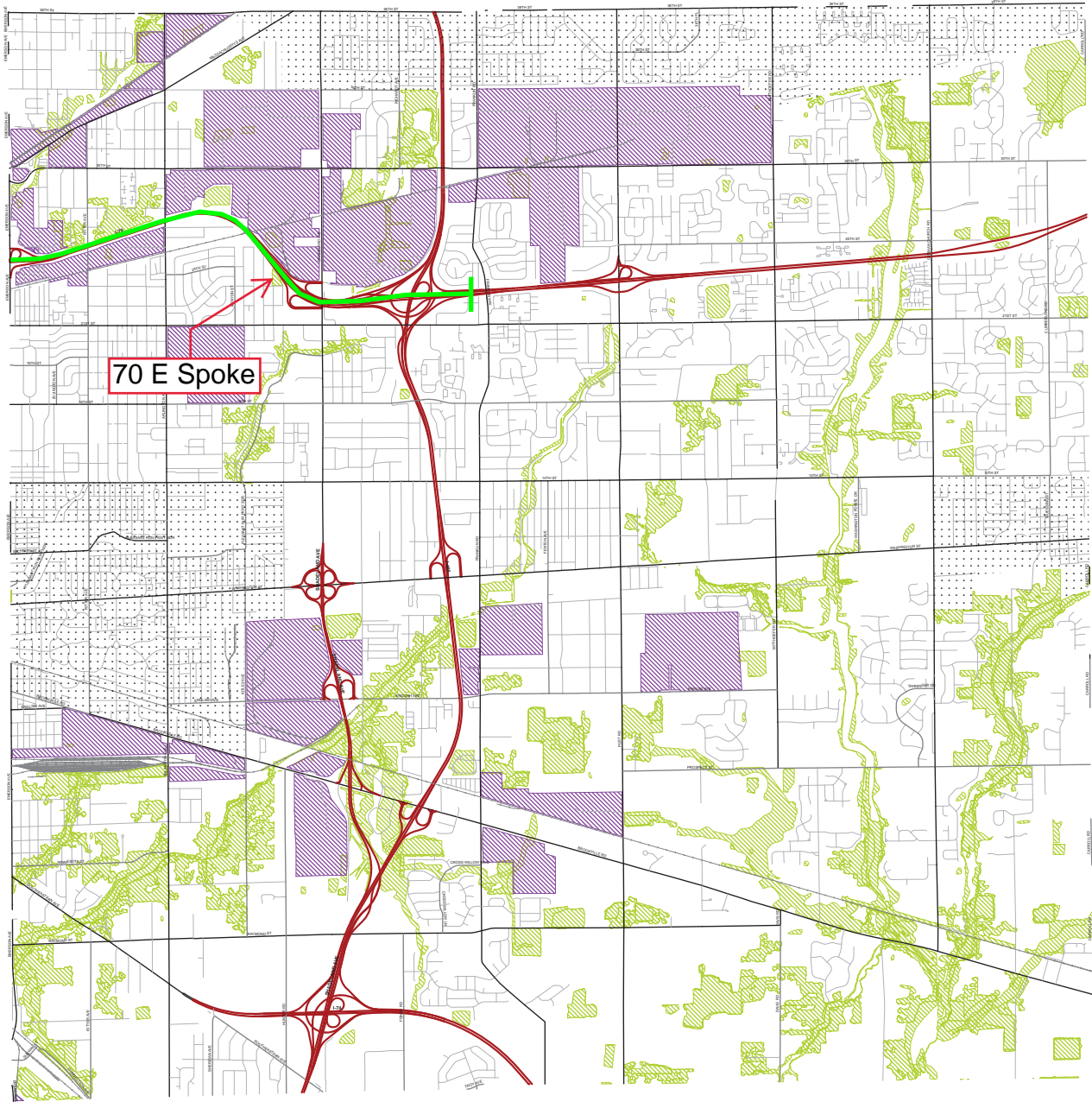


the  
**MARION COUNTY** **LAND USE PLAN**

A component of the Comprehensive Plan for Indianapolis and Marion County

ADOPTED BY THE METROPOLITAN DEVELOPMENT COMMISSION AS AN ELEMENT OF THE COMPREHENSIVE PLAN FOR INDIANAPOLIS AND MARION COUNTY

DECEMBER 19, 2018  
 2018-CPS-R-011



**Land Use Map**  
 WARREN TOWNSHIP - OVERLAYS



**LEGEND**

**LIVING TYPOLOGIES**

- RURAL OR ESTATE NEIGHBORHOOD
- SUBURBAN NEIGHBORHOOD
- TRADITIONAL NEIGHBORHOOD
- CITY NEIGHBORHOOD

**MIXED-USE TYPOLOGIES**

- VILLAGE MIXED-USE
- URBAN MIXED-USE
- CORE MIXED-USE
- INSTITUTION-ORIENTED MIXED-USE

**WORKING TYPOLOGIES**

- OFFICE COMMERCIAL
- COMMUNITY COMMERCIAL
- REGIONAL COMMERCIAL
- HEAVY COMMERCIAL
- OFFICE/INDUSTRIAL MIXED-USE
- LIGHT INDUSTRIAL
- HEAVY INDUSTRIAL

**OTHER USES**

- AGRICULTURAL PRESERVATION
- LARGE-SCALE PARK
- LINEAR PARK
- FLOODWAY
- REGIONAL SPECIAL-USE

**OVERLAYS**

- ENVIRONMENTALLY SENSITIVE AREA (ES)
- TRANSIT-ORIENTED DEVELOPMENT (TOD)
- TOWN CENTER (TC)
- RESIDENTIAL CORRIDOR RESERVE (RR)
- INDUSTRIAL RESERVE (IR)
- AIRPORT VICINITY(AV)
- CRITICAL AREA (CA)

*..... This plan does not apply to areas covered in dots.*

The MARION COUNTY LAND USE PLAN consists of two major components: A Land Use Pattern Book and Land Use Maps. The Land Use Pattern Book is the written component of the Marion County Land Use Plan, and lays out the land uses, typologies, and overlays that are applied in the Land Use Maps. The Land Use Pattern Book, as amended from time to time, is a separate document which must be consulted in conjunction with the Land Use Plan Maps when evaluating or making decisions about land use and development.

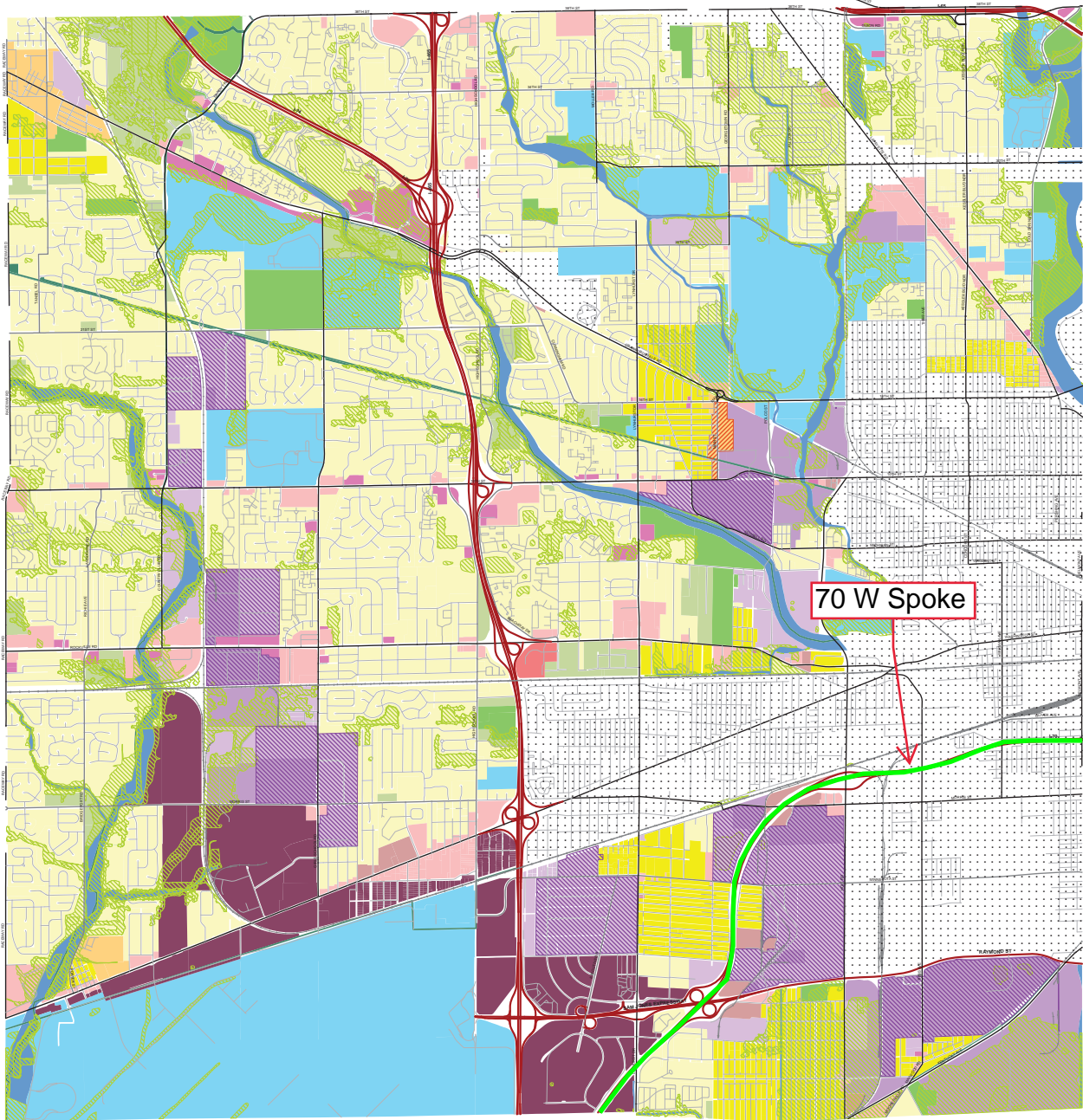


the  
**MARION COUNTY** **LAND USE PLAN**

A component of the Comprehensive Plan for Indianapolis and Marion County

ADOPTED BY THE  
 METROPOLITAN DEVELOPMENT COMMISSION  
 AS AN ELEMENT OF THE COMPREHENSIVE PLAN  
 FOR INDIANAPOLIS AND MARION COUNTY

DECEMBER 19, 2018  
 2018-CP5-R-012



**Land Use Map**  
**WAYNE TOWNSHIP**



**LEGEND**

**LIVING TYPOLOGIES**

- RURAL OR ESTATE NEIGHBORHOOD
- SUBURBAN NEIGHBORHOOD
- TRADITIONAL NEIGHBORHOOD
- CITY NEIGHBORHOOD

**MIXED-USE TYPOLOGIES**

- VILLAGE MIXED-USE
- URBAN MIXED-USE
- CORE MIXED-USE
- INSTITUTION-ORIENTED MIXED-USE

**WORKING TYPOLOGIES**

- OFFICE COMMERCIAL
- COMMUNITY COMMERCIAL
- REGIONAL COMMERCIAL
- HEAVY COMMERCIAL
- OFFICE/INDUSTRIAL MIXED-USE
- LIGHT INDUSTRIAL
- HEAVY INDUSTRIAL

**OTHER USES**

- AGRICULTURAL PRESERVATION
- LARGE-SCALE PARK
- LINEAR PARK
- FLOODWAY
- REGIONAL SPECIAL-USE

**OVERLAYS**

- ENVIRONMENTALLY SENSITIVE AREA (ES)
- TRANSIT-ORIENTED DEVELOPMENT (TOD)
- TOWN CENTER (TC)
- RESIDENTIAL CORRIDOR RESERVE (RR)
- INDUSTRIAL RESERVE (IR)
- AIRPORT VICINITY (AV)
- CRITICAL AREA (CA)

..... This plan does not apply to areas covered in dots.

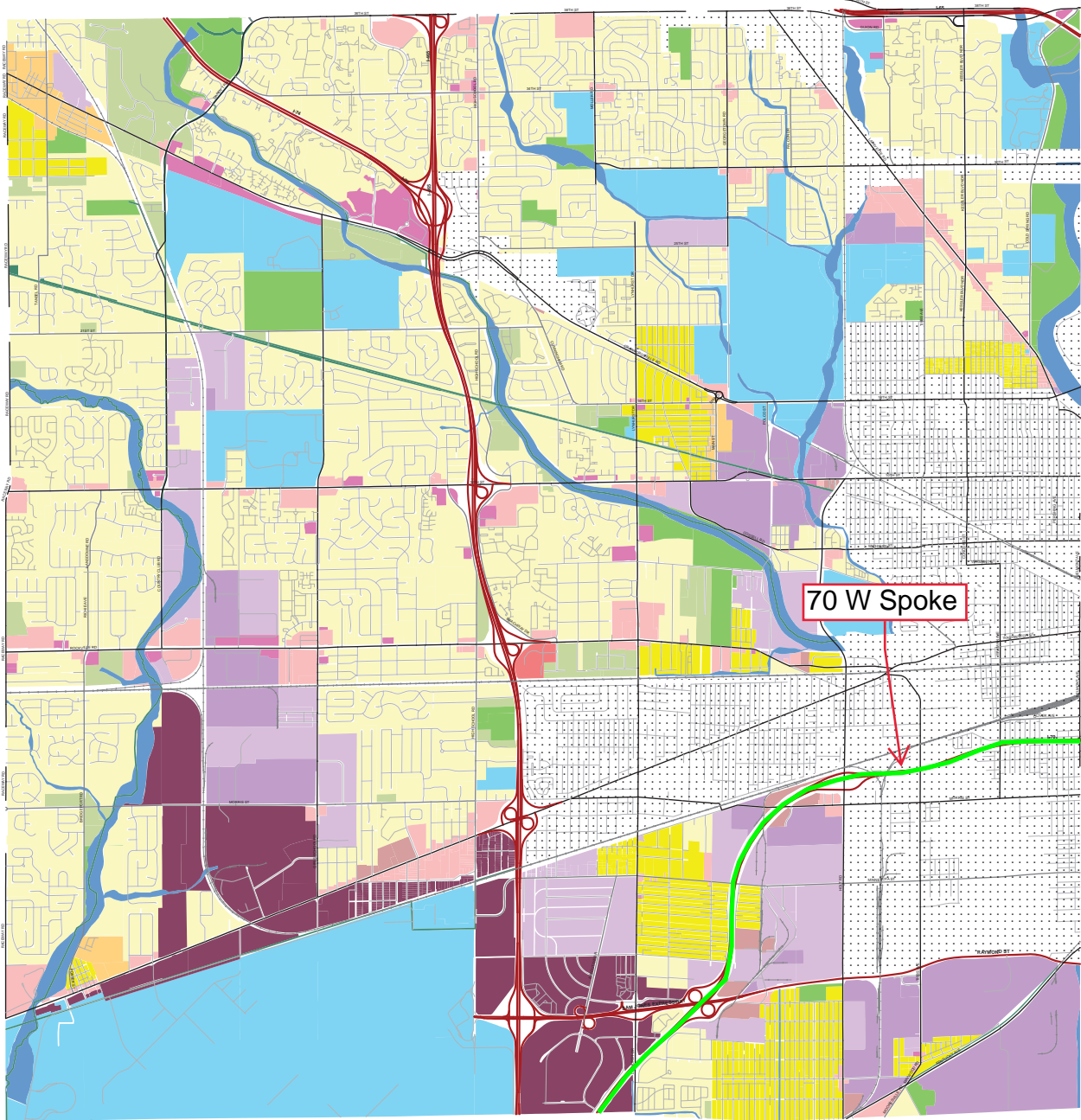
The MARION COUNTY LAND USE PLAN consists of two major components: A Land Use Pattern Book and Land Use Maps. The Land Use Pattern Book is the written component of the Marion County Land Use Plan, and lays out the land uses, typologies, and overlays that are applied in the Land Use Maps. The Land Use Pattern Book, as amended from time to time, is a separate document which must be consulted in conjunction with the Land Use Plan Maps when evaluating or making decisions about land use and development.



the  
**MARION COUNTY** **LAND USE PLAN**

A component of the Comprehensive Plan for Indianapolis and Marion County

ADOPTED BY THE  
 METROPOLITAN DEVELOPMENT COMMISSION  
 AS AN ELEMENT OF THE COMPREHENSIVE PLAN  
 FOR INDIANAPOLIS AND MARION COUNTY  
 DECEMBER 19, 2018  
 2018-CPS-R-012



**Land Use Map**  
 WAYNE TOWNSHIP - TYPOLOGIES/USES



**LEGEND**

**LIVING TYPOLOGIES**

- RURAL OR ESTATE NEIGHBORHOOD
- SUBURBAN NEIGHBORHOOD
- TRADITIONAL NEIGHBORHOOD
- CITY NEIGHBORHOOD

**MIXED-USE TYPOLOGIES**

- VILLAGE MIXED-USE
- URBAN MIXED-USE
- CORE MIXED-USE
- INSTITUTION-ORIENTED MIXED-USE

**WORKING TYPOLOGIES**

- OFFICE COMMERCIAL
- COMMUNITY COMMERCIAL
- REGIONAL COMMERCIAL
- HEAVY COMMERCIAL
- OFFICE/INDUSTRIAL MIXED-USE
- LIGHT INDUSTRIAL
- HEAVY INDUSTRIAL

**OTHER USES**

- AGRICULTURAL PRESERVATION
- LARGE-SCALE PARK
- LINEAR PARK
- FLOODWAY
- REGIONAL SPECIAL-USE

**OVERLAYS**

- ENVIRONMENTALLY SENSITIVE AREA (ES)
- TRANSIT-ORIENTED DEVELOPMENT (TOD)
- TOWN CENTER (TC)
- RESIDENTIAL CORRIDOR RESERVE (RR)
- INDUSTRIAL RESERVE (IR)
- AIRPORT VICINITY(AV)
- CRITICAL AREA (CA)

..... This plan does not apply to areas covered in dots.

The MARION COUNTY LAND USE PLAN consists of two major components: A Land Use Pattern Book and Land Use Maps. The Land Use Pattern Book is the written component of the Marion County Land Use Plan, and lays out the land uses, typologies, and overlays that are applied in the Land Use Maps. The Land Use Pattern Book, as amended from time to time, is a separate document which must be consulted in conjunction with the Land Use Plan Maps when evaluating or making decisions about land use and development.

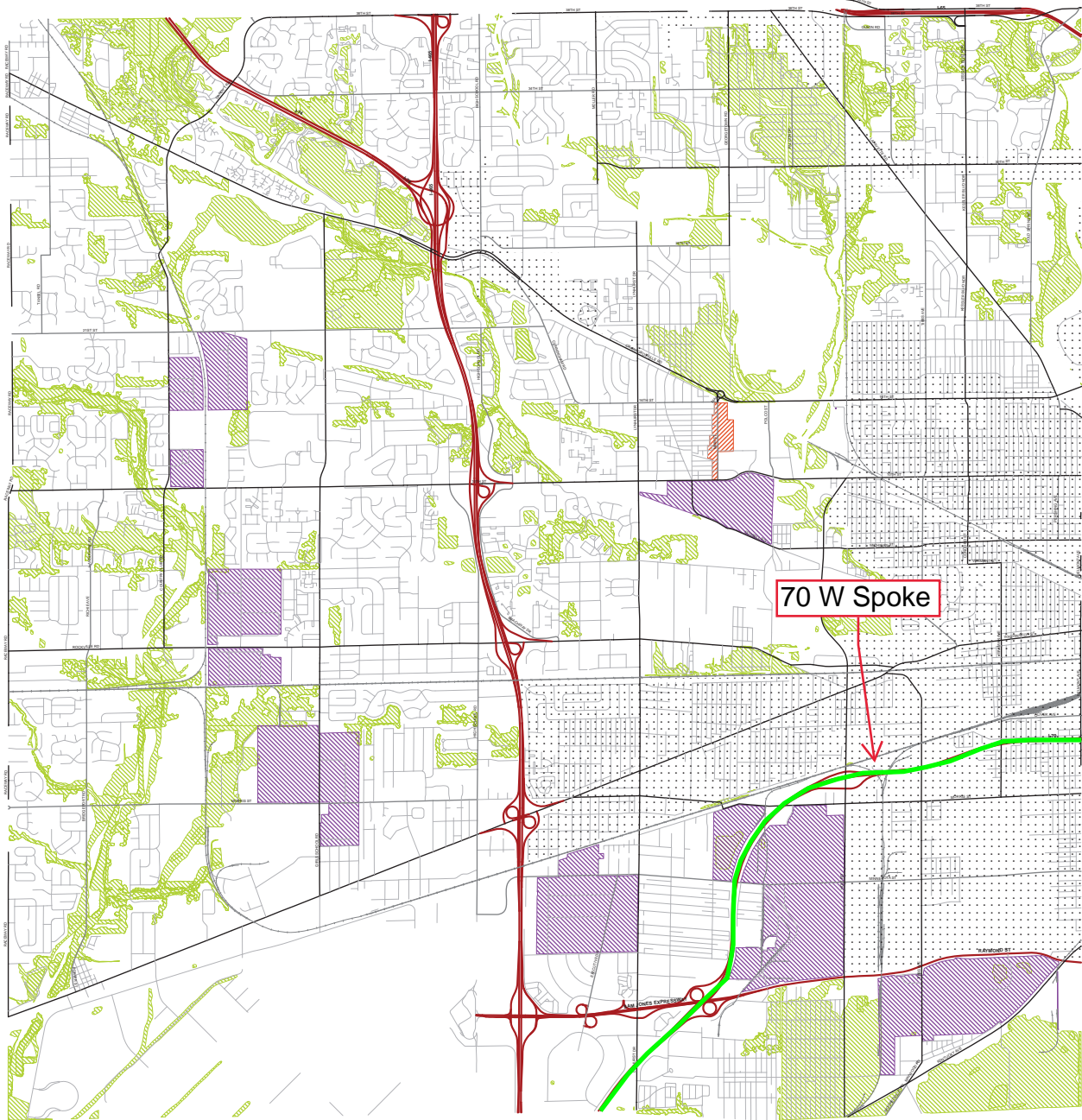


the **MARION COUNTY** **LAND USE PLAN**

A component of the Comprehensive Plan for Indianapolis and Marion County

ADOPTED BY THE METROPOLITAN DEVELOPMENT COMMISSION AS AN ELEMENT OF THE COMPREHENSIVE PLAN FOR INDIANAPOLIS AND MARION COUNTY

DECEMBER 19, 2018  
2018-CP5-R-012



**Land Use Map**  
WAYNE TOWNSHIP - OVERLAYS



**LEGEND**

**LIVING TYPOLOGIES**

- RURAL OR ESTATE NEIGHBORHOOD
- SUBURBAN NEIGHBORHOOD
- TRADITIONAL NEIGHBORHOOD
- CITY NEIGHBORHOOD

**MIXED-USE TYPOLOGIES**

- VILLAGE MIXED-USE
- URBAN MIXED-USE
- CORE MIXED-USE
- INSTITUTION-ORIENTED MIXED-USE

**WORKING TYPOLOGIES**

- OFFICE COMMERCIAL
- COMMUNITY COMMERCIAL
- REGIONAL COMMERCIAL
- HEAVY COMMERCIAL
- OFFICE/INDUSTRIAL MIXED-USE
- LIGHT INDUSTRIAL
- HEAVY INDUSTRIAL

**OTHER USES**

- AGRICULTURAL PRESERVATION
- LARGE-SCALE PARK
- LINEAR PARK
- FLOODWAY
- REGIONAL SPECIAL-USE

**OVERLAYS**

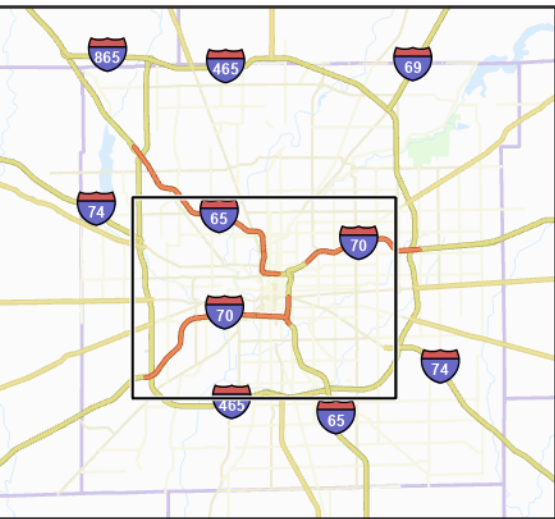
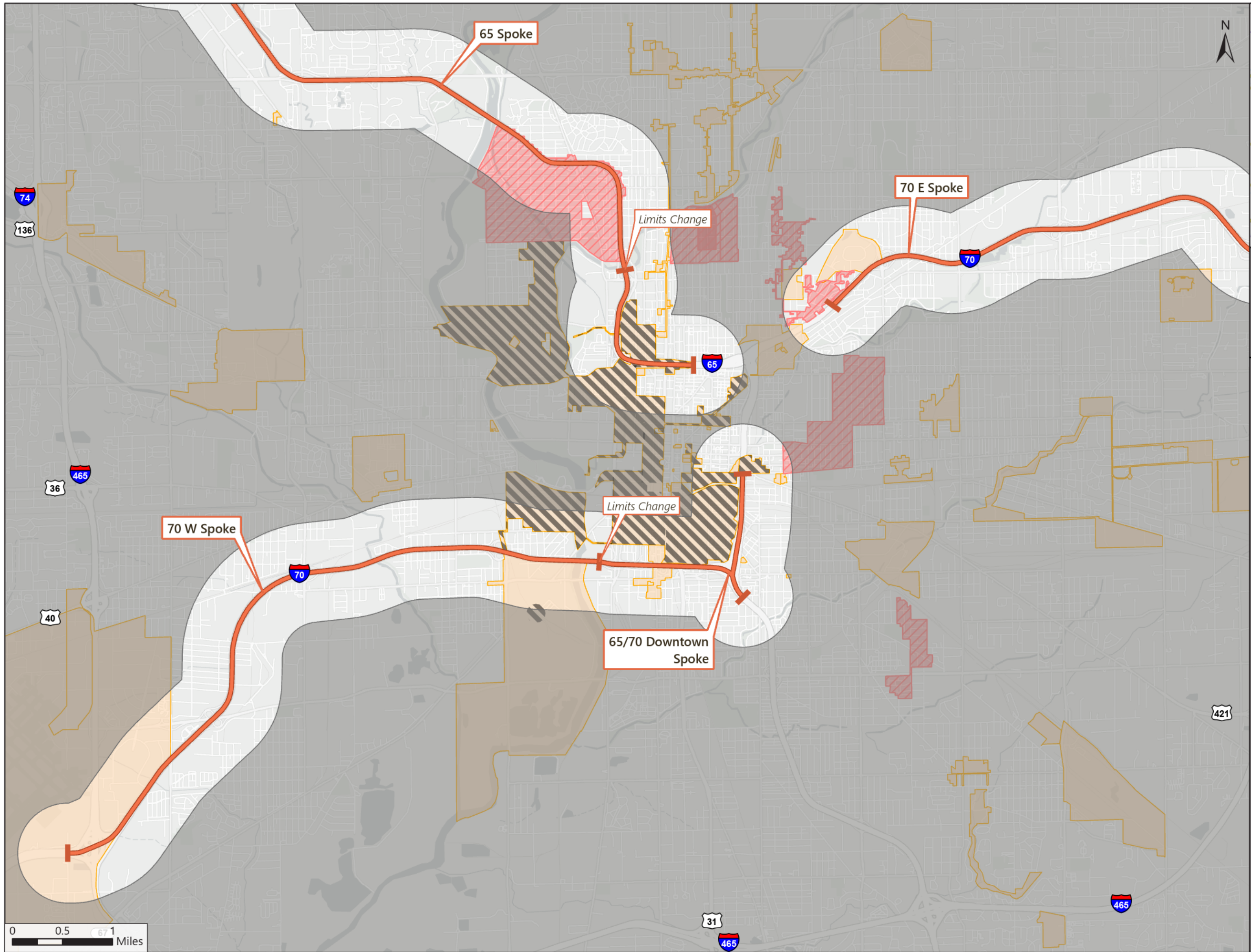
- ENVIRONMENTALLY SENSITIVE AREA (ES)
- TRANSIT-ORIENTED DEVELOPMENT (TOD)
- TOWN CENTER (TC)
- RESIDENTIAL CORRIDOR RESERVE (RR)
- INDUSTRIAL RESERVE (IR)
- AIRPORT VICINITY (AV)
- CRITICAL AREA (CA)

..... This plan does not apply to areas covered in dots.

The MARION COUNTY LAND USE PLAN consists of two major components: A Land Use Pattern Book and Land Use Maps. The Land Use Pattern Book is the written component of the Marion County Land Use Plan, and lays out the land uses, typologies, and overlays that are applied in the Land Use Maps. The Land Use Pattern Book, as amended from time to time, is a separate document which must be consulted in conjunction with the Land Use Plan Maps when evaluating or making decisions about land use and development.



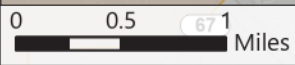




### Tax Increment Financing (TIF) Districts

1:58,000

- Study Limits
- Study Area Boundary
- District Type
  - Consolidated TIF
  - HOTIF
  - TIF



HNTB Community Intelligence Toolkit, CEQ CEJST, State of Indiana, INDOT, Esri, NASA, NGA, USGS, City of Indianapolis Marion Co, HERE, Garmin, SafeGraph, GeoTechnologies, Inc, METI/NASA, EPA, NPS, US Census Bureau, USDA, FAO, © OpenStreetMap, Microsoft